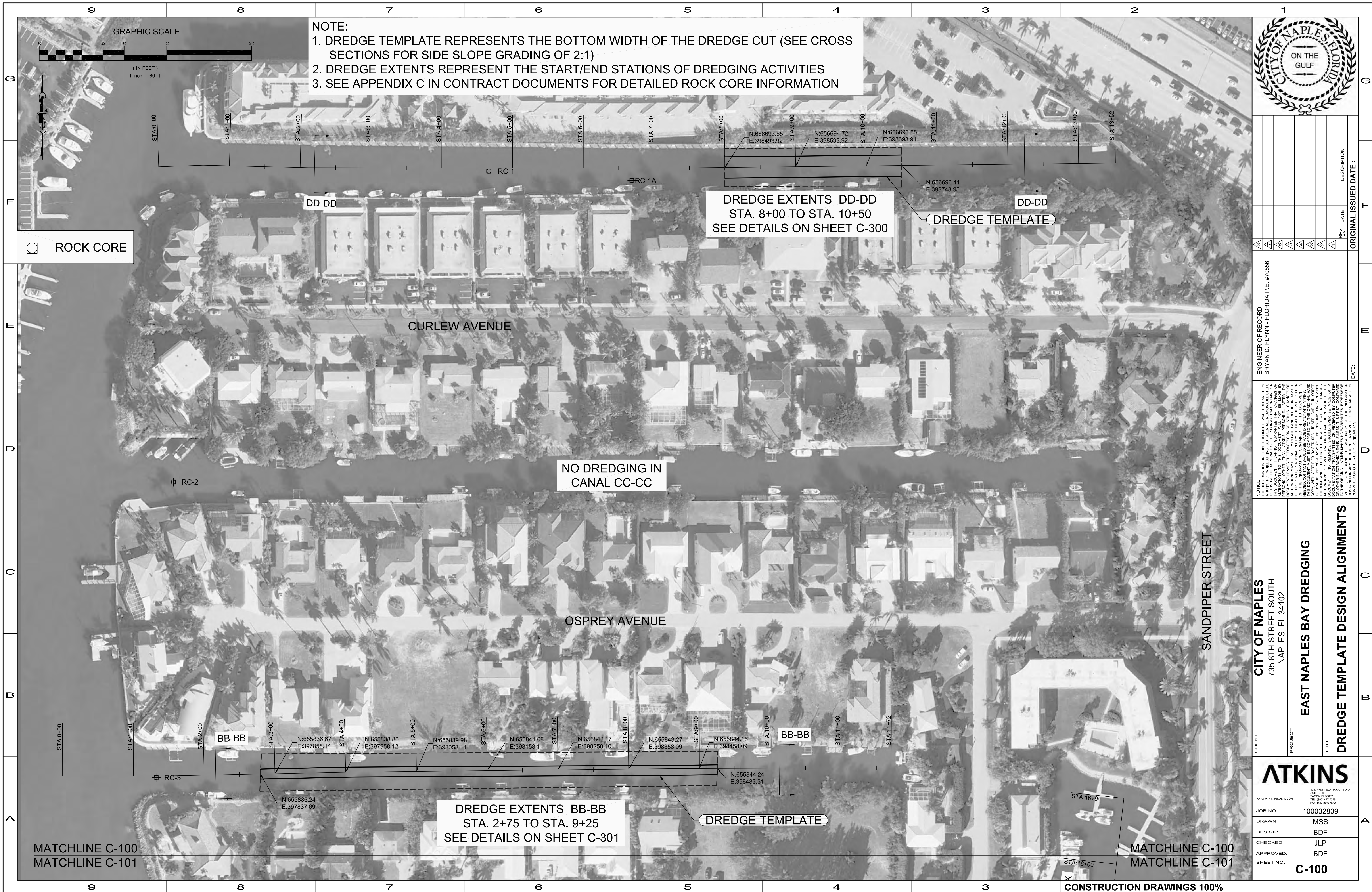


User Name: 21685
Drawing Name: M:\Projects\East Naples Bay - 2013 Phase II\DWG\Construction Drawings 22434C-100.dwg
Feb 14, 2013 - 3:07 pm



GRAPHIC SCALE

(IN FEET)
1 inch = 60 ft.

NOTE:
1. DREDGE TEMPLATE REPRESENTS THE BOTTOM WIDTH OF THE DREDGE CUT (SEE CROSS SECTIONS FOR SIDE SLOPE GRADING OF 2:1)
2. DREDGE EXTENTS REPRESENT THE START/END STATIONS OF DREDGING ACTIVITIES
3. SEE APPENDIX C IN CONTRACT DOCUMENTS FOR DETAILED ROCK CORE INFORMATION

ROCK CORE

CURLEW AVENUE

NO DREDGING IN CANAL CC-CC

OSPREY AVENUE

SANDPIPER STREET

DREDGE EXTENTS DD-DD
STA. 8+00 TO STA. 10+50
SEE DETAILS ON SHEET C-300

DREDGE TEMPLATE

BB-BB

BB-BB

DREDGE EXTENTS BB-BB
STA. 2+75 TO STA. 9+25
SEE DETAILS ON SHEET C-301

DREDGE TEMPLATE

MATCHLINE C-100
MATCHLINE C-101

MATCHLINE C-100
MATCHLINE C-101



REV.	DATE	DESCRIPTION

ENGINEER OF RECORD:
BRYAN D. FLYNN - FLORIDA P.E. #70866

DATE: _____ ORIGINAL ISSUED DATE: _____

NOTICE: THE INFORMATION IN THIS DOCUMENT WAS PREPARED BY THE ENGINEER OF RECORD OR HIS EMPLOYEES. THE ENGINEER OF RECORD OR HIS EMPLOYEES HAVE CONDUCTED VISUAL GENERAL VERIFICATION OF THE INFORMATION CONTAINED IN THIS DOCUMENT TO THE BEST OF THEIR KNOWLEDGE AND BELIEF. THE ENGINEER OF RECORD OR HIS EMPLOYEES DO NOT WARRANT THE ACCURACY, COMPLETENESS, OR RELIABILITY OF THE INFORMATION CONTAINED IN THIS DOCUMENT. THE USER OF THIS DOCUMENT SHALL BE RESPONSIBLE FOR OBTAINING ALL NECESSARY PERMITS AND FOR VERIFYING THE ACCURACY, COMPLETENESS, AND RELIABILITY OF THE INFORMATION CONTAINED IN THIS DOCUMENT. NO WARRANTY, EXPRESS OR IMPLIED, IS MADE BY THE ENGINEER OF RECORD OR HIS EMPLOYEES FOR THE INFORMATION CONTAINED IN THIS DOCUMENT. THE USER OF THIS DOCUMENT SHALL BE RESPONSIBLE FOR OBTAINING ALL NECESSARY PERMITS AND FOR VERIFYING THE ACCURACY, COMPLETENESS, AND RELIABILITY OF THE INFORMATION CONTAINED IN THIS DOCUMENT. NO WARRANTY, EXPRESS OR IMPLIED, IS MADE BY THE ENGINEER OF RECORD OR HIS EMPLOYEES FOR THE INFORMATION CONTAINED IN THIS DOCUMENT.

CLIENT
CITY OF NAPLES
735 8TH STREET SOUTH
NAPLES, FL 34102

PROJECT
EAST NAPLES BAY DREDGING

TITLE
DREDGE TEMPLATE DESIGN ALIGNMENTS

ATKINS
4300 WEST BAY SCOUT BLVD
SUITE 700
NAPLES, FL 34107
TEL: (800) 471-2255
FAX: (813) 655-6652

JOB NO.: 100032809

DRAWN: MSS

DESIGN: BDF

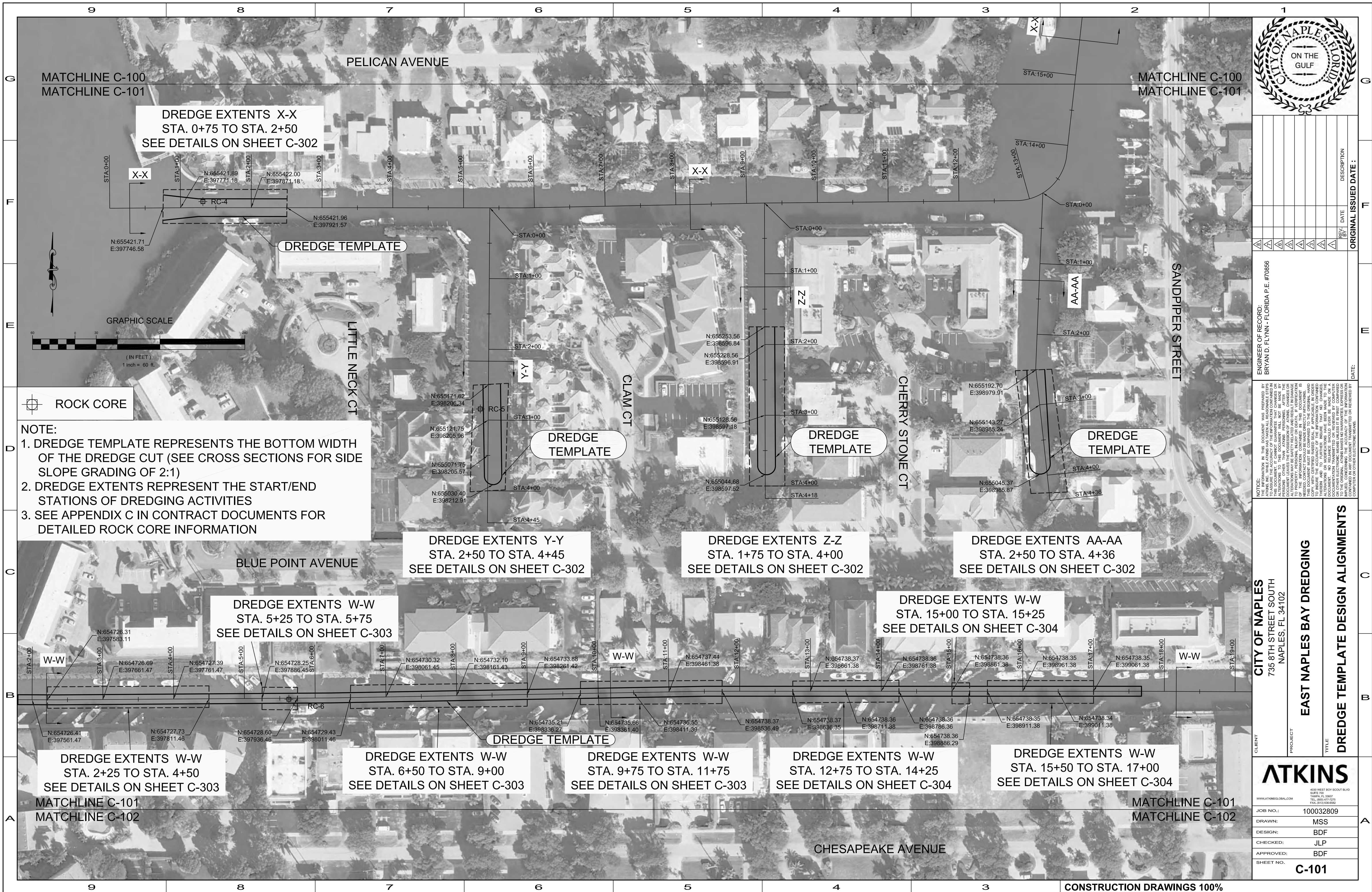
CHECKED: JLP

APPROVED: BDF

SHEET NO. **C-100**

CONSTRUCTION DRAWINGS 100%

User Name: 21185
Drawing Name: M:\Projects\East Naples Bay - 2013 Phase II\DWG\Construction Drawings\22434C-100.dwg
Feb 14, 2013 - 3:02pm



NOTE:

1. DREDGE TEMPLATE REPRESENTS THE BOTTOM WIDTH OF THE DREDGE CUT (SEE CROSS SECTIONS FOR SIDE SLOPE GRADING OF 2:1)
2. DREDGE EXTENTS REPRESENT THE START/END STATIONS OF DREDGING ACTIVITIES
3. SEE APPENDIX C IN CONTRACT DOCUMENTS FOR DETAILED ROCK CORE INFORMATION



REV	DATE	DESCRIPTION

ORIGINAL ISSUED DATE: _____

ENGINEER OF RECORD:
BRYAN D. FLYNN - FLORIDA P.E. #70886

DATE: _____

NOTE: THE INFORMATION IN THIS DOCUMENT WAS PREPARED BY THE CONSULTANT FOR THE CLIENT. THE CONSULTANT HAS CONDUCTED A VISUAL GENERAL VERIFICATION OF THE INFORMATION CONTAINED IN THIS DOCUMENT TO ENSURE THE ACCURACY OF THE INFORMATION CONTAINED IN THIS DOCUMENT WILL NOT BE MADE BY THE CONSULTANT. THE CONSULTANT DOES NOT WARRANT THE ACCURACY OF THE INFORMATION CONTAINED IN THIS DOCUMENT. THE CONSULTANT SHALL BE RESPONSIBLE FOR THE ACCURACY OF THE INFORMATION CONTAINED IN THIS DOCUMENT. THE CONSULTANT SHALL BE RESPONSIBLE FOR THE ACCURACY OF THE INFORMATION CONTAINED IN THIS DOCUMENT. THE CONSULTANT SHALL BE RESPONSIBLE FOR THE ACCURACY OF THE INFORMATION CONTAINED IN THIS DOCUMENT.

CITY OF NAPLES
735 8TH STREET SOUTH
NAPLES, FL 34102

CLIENT

PROJECT

EAST NAPLES BAY DREDGING

TITLE

DREDGE TEMPLATE DESIGN ALIGNMENTS

ATKINS	
4300 WEST ROY SCOTT BLVD SUITE 700 DAPER, FL 32607 TEL: 800.477.2255 PALM-BEACH.GOV	
JOB NO.:	100032809
DRAWN:	MSS
DESIGN:	BDF
CHECKED:	JLP
APPROVED:	BDF
SHEET NO.:	C-101

User Name: 21855
 Drawing Name: M:\Projects\East Naples Bay - 2013 Phase II\DWG\Construction Drawings\22x34-C-100.dwg
 Feb 14, 2013 - 3:02pm



DREDGE EXTENTS V-V
 STA. 5+75 TO STA. 9+75
 SEE DETAILS ON SHEET C-304

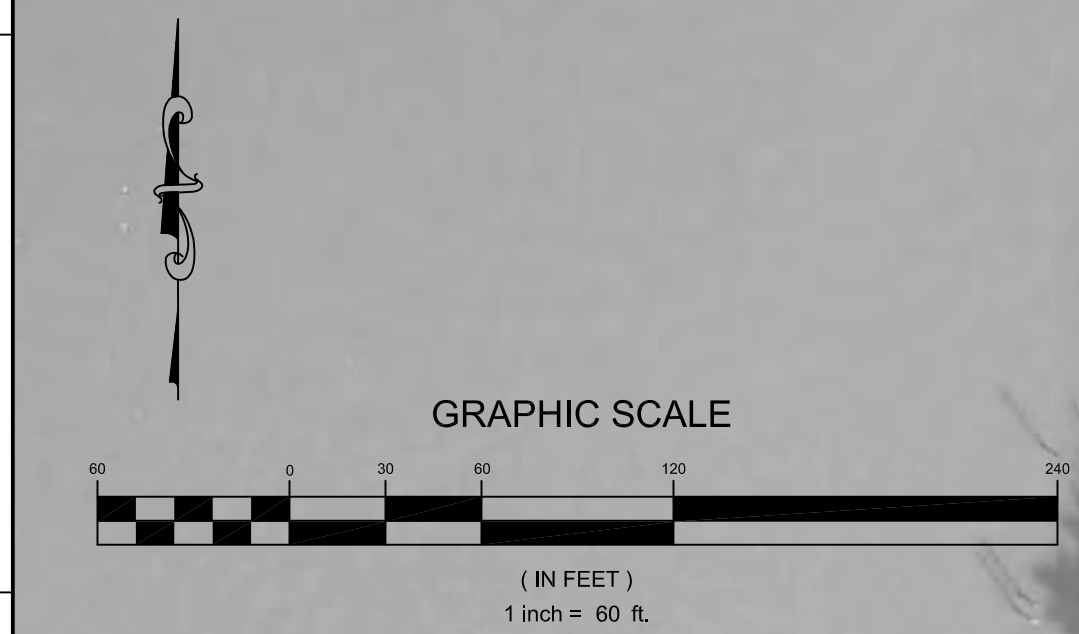
DREDGE EXTENTS R-R
 STA. 0+75 TO STA. 2+25
 & STA. 2+75 TO STA. 5+00
 SEE DETAILS ON SHEET C-304

DREDGE EXTENTS S-S
 STA. 0+00 TO STA. 0+75
 SEE DETAILS ON SHEET C-304

DREDGE EXTENTS R-R
 STA. 12+50 TO STA. 13+50
 SEE DETAILS ON SHEET C-304

DREDGE EXTENTS R-R
 STA. 15+50 TO STA. 17+00
 SEE DETAILS ON SHEET C-304

ROCK CORE



MATCHLINE C-102
 MATCHLINE C-103

- NOTE:**
- DREDGE TEMPLATE REPRESENTS THE BOTTOM WIDTH OF THE DREDGE CUT (SEE CROSS SECTIONS FOR SIDE SLOPE GRADING OF 2:1)
 - DREDGE EXTENTS REPRESENT THE START/END STATIONS OF DREDGING ACTIVITIES
 - SEE APPENDIX C IN CONTRACT DOCUMENTS FOR DETAILED ROCK CORE INFORMATION



REV	DATE	DESCRIPTION

ORIGINAL ISSUED DATE: _____

ENGINEER OF RECORD:
 BRYAN D. FLYNN - FLORIDA P.E. #70886

DATE: _____

CLIENT
CITY OF NAPLES
 735 8TH STREET SOUTH
 NAPLES, FL 34102

PROJECT
EAST NAPLES BAY DREDGING

TITLE
DREDGE TEMPLATE DESIGN ALIGNMENTS

400 WEST ROY SCOTT BLVD
 SUITE 700
 TAMPA, FL 33607
 TEL: 800.477.2215
 FAX: 813.255.8686
 WWW.ATKINSGLOBAL.COM

JOB NO.: 100032809

DRAWN: MSS

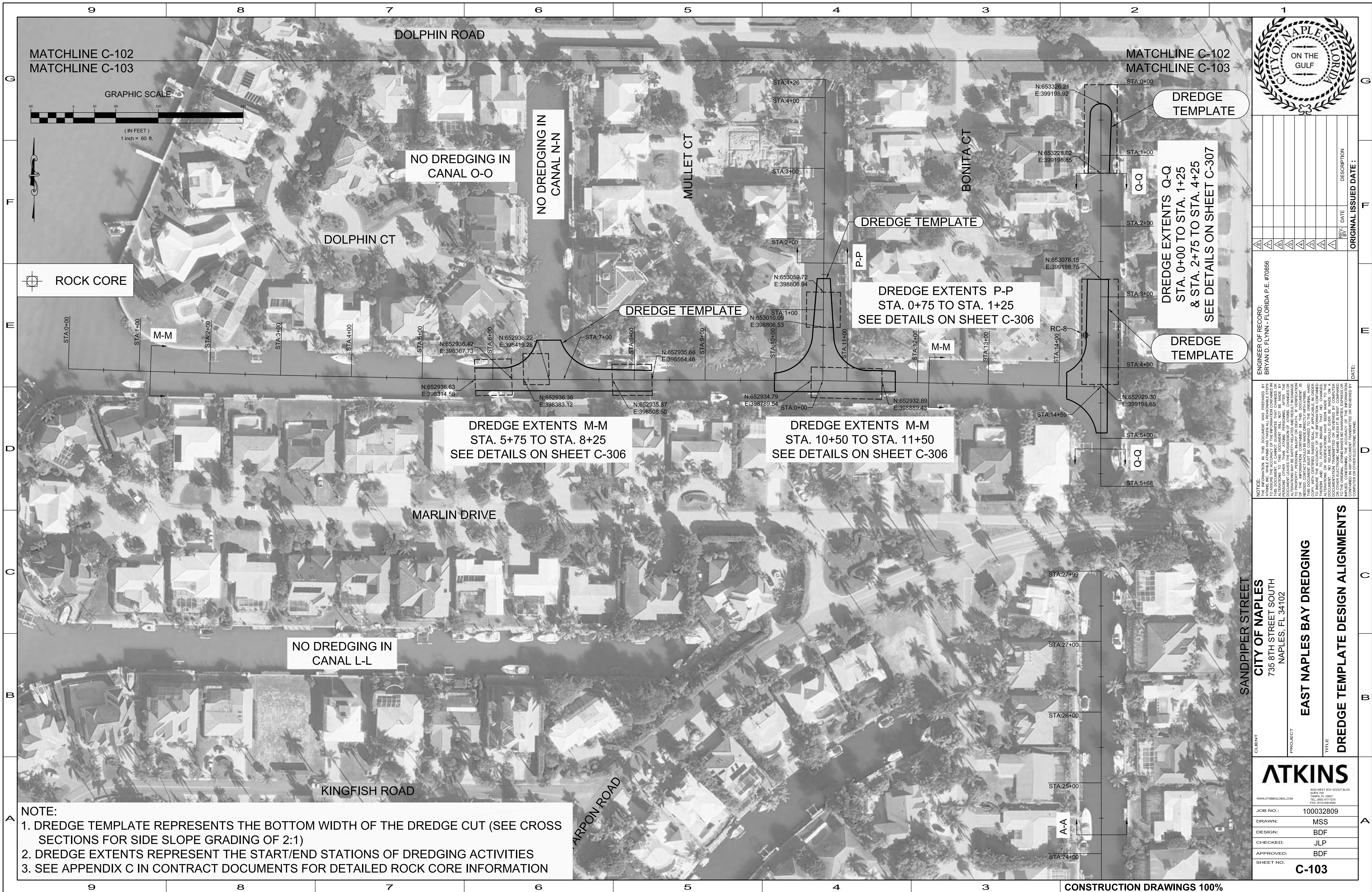
DESIGN: BDF

CHECKED: JLP

APPROVED: BDF

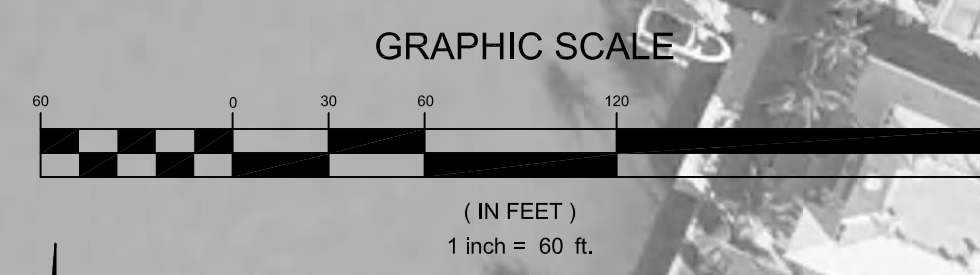
SHEET NO. **C-102**

User Name: 21855
 Drawing Name: M:\Projects\East Naples Bay - 2013 Phase II\DWG\Construction Drawings\22344C-100.dwg
 Feb 14, 2013 - 3:02pm



MATCHLINE C-102
 MATCHLINE C-103

MATCHLINE C-102
 MATCHLINE C-103



ROCK CORE

NO DREDGING IN CANAL O-O

NO DREDGING IN CANAL N-N

DOLPHIN CT

MULLET CT

BONITA CT

DREDGE TEMPLATE

DREDGE TEMPLATE

DREDGE EXTENTS P-P
 STA. 0+75 TO STA. 1+25
 SEE DETAILS ON SHEET C-306

DREDGE TEMPLATE

DREDGE EXTENTS Q-Q
 STA. 0+00 TO STA. 1+25
 & STA. 2+75 TO STA. 4+25
 SEE DETAILS ON SHEET C-307

DREDGE TEMPLATE

DREDGE EXTENTS M-M
 STA. 5+75 TO STA. 8+25
 SEE DETAILS ON SHEET C-306

DREDGE EXTENTS M-M
 STA. 10+50 TO STA. 11+50
 SEE DETAILS ON SHEET C-306

NO DREDGING IN CANAL L-L

MARLIN DRIVE

KINGFISH ROAD

CARBON ROAD

NOTE:
 1. DREDGE TEMPLATE REPRESENTS THE BOTTOM WIDTH OF THE DREDGE CUT (SEE CROSS SECTIONS FOR SIDE SLOPE GRADING OF 2:1)
 2. DREDGE EXTENTS REPRESENT THE START/END STATIONS OF DREDGING ACTIVITIES
 3. SEE APPENDIX C IN CONTRACT DOCUMENTS FOR DETAILED ROCK CORE INFORMATION



REV	DATE	DESCRIPTION

ENGINEER OF RECORD:
 BRYAN D. FLYNN - FLORIDA P.E. #70866

DATE: _____

CLIENT
CITY OF NAPLES
 735 8TH STREET SOUTH
 NAPLES, FL 34102

PROJECT
EAST NAPLES BAY DREDGING

TITLE
DREDGE TEMPLATE DESIGN ALIGNMENTS

ATKINS

4301 WEST BOY SCOUT BLVD
 SUITE 700
 TAMPA, FL 33607
 TEL: 800.477.2215
 FAX: 813.288.8626

WWW.ATKINSGLOBAL.COM

JOB NO.: 100032809

DRAWN: MSS

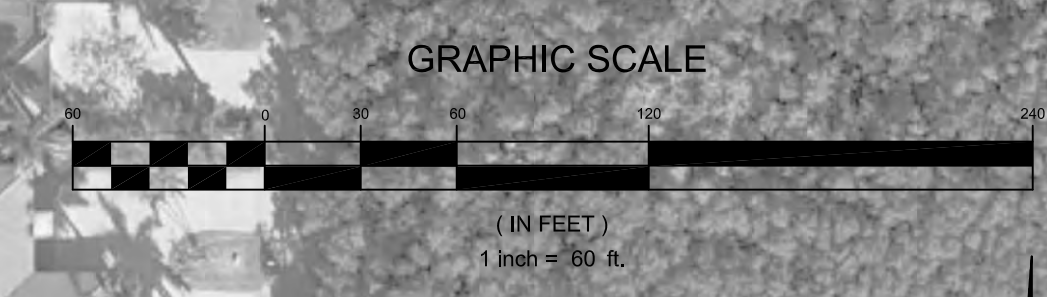
DESIGN: BDF

CHECKED: JLP

APPROVED: BDF

SHEET NO. **C-103**

User Name: 21185
 Drawing Name: M:\Projects\East Naples Bay - 2013 Phase II\DWG\Construction Drawings\22a34C-100.dwg
 Feb 14, 2013 - 3:03pm



REV	DATE	DESCRIPTION

ORIGINAL ISSUED DATE: _____

ENGINEER OF RECORD:
 BRYAN D. FLYNN - FLORIDA P.E. #70866

DATE: _____

CLIENT
CITY OF NAPLES
 735 8TH STREET SOUTH
 NAPLES, FL 34102

PROJECT
EAST NAPLES BAY DREDGING

TITLE
DREDGE TEMPLATE DESIGN ALIGNMENTS

ATKINS

400 WEST ROY SCOTT BLVD
 SUITE 700
 TAMPA, FL 33607
 TEL: 800.477.2255
 FAX: 813.253.6666
 WWW.ATKINSGLOBAL.COM

JOB NO.: 100032809

DRAWN: MSS

DESIGN: BDF

CHECKED: JLP

APPROVED: BDF

SHEET NO. **C-104**

DREDGE TEMPLATE

DREDGE EXTENTS C-C
 STA. 4+75 TO STA. 5+25
 SEE DETAILS ON SHEET C-307

DREDGE EXTENTS A-A
 STA. 9+00 TO STA. 16+75
 SEE DETAILS ON SHEET C-307

NOTE:

- DREDGE TEMPLATE REPRESENTS THE BOTTOM WIDTH OF THE DREDGE CUT (SEE CROSS SECTIONS FOR SIDE SLOPE GRADING OF 2:1)
- DREDGE EXTENTS REPRESENT THE START/END STATIONS OF DREDGING ACTIVITIES
- SEE APPENDIX C IN CONTRACT DOCUMENTS FOR DETAILED ROCK CORE INFORMATION

ROCK CORE

NO DREDGING IN CANAL D-D

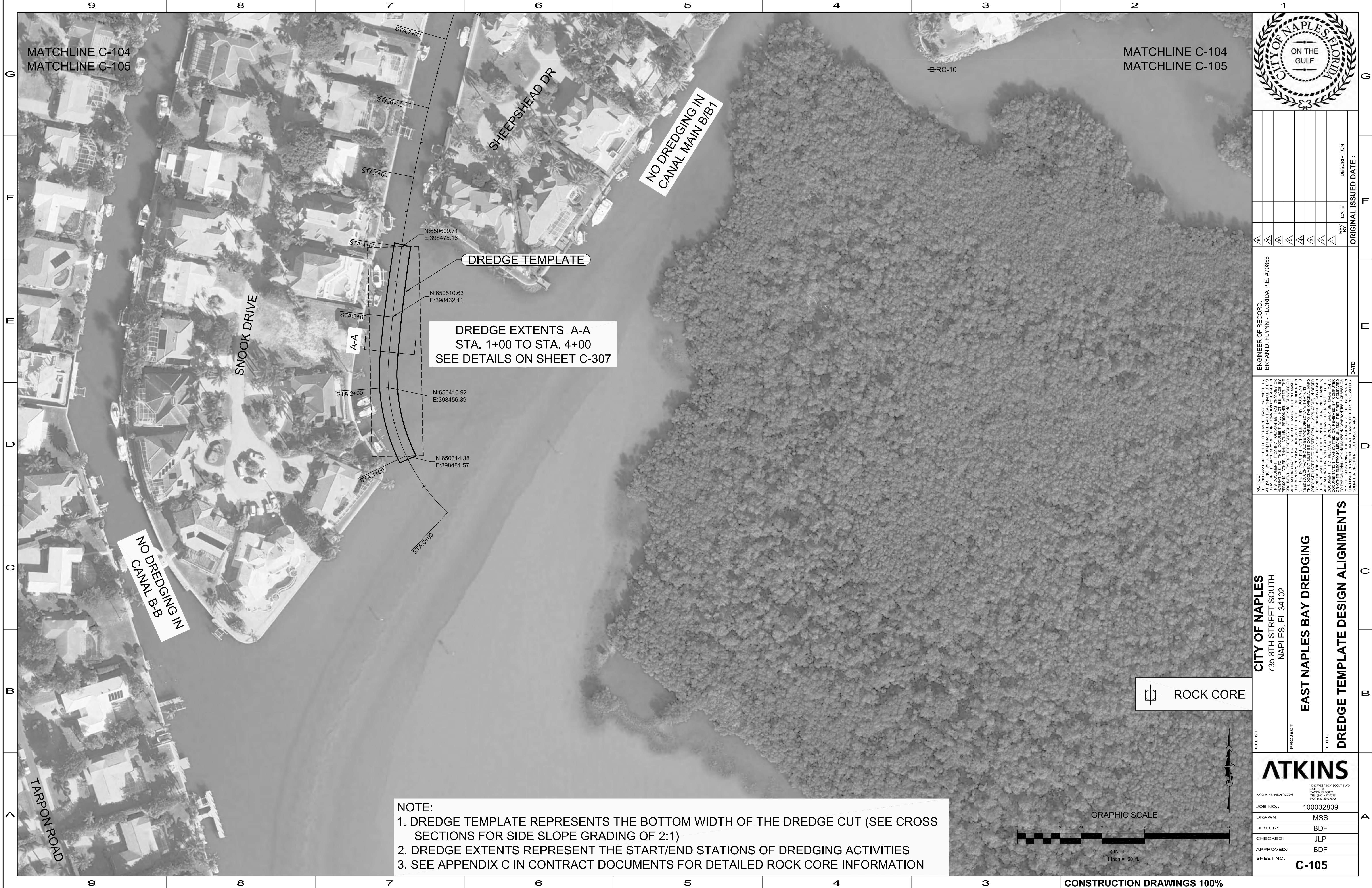
NO DREDGING IN CANAL B-B

NO DREDGING IN CANAL MAIN B/B1

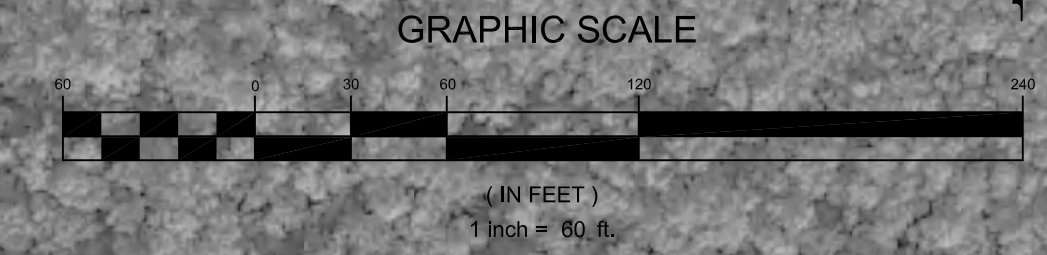
MATCHLINE C-104
 MATCHLINE C-105

MATCHLINE C-104
 MATCHLINE C-105



User Name: 21185
 Drawing Name: M:\Projects\East Naples Bay - 2013 Phase II\DWG\Construction Drawings\22x34C-100.dwg
 Feb 14, 2013 - 3:03pm



NOTE:
 1. DREDGE TEMPLATE REPRESENTS THE BOTTOM WIDTH OF THE DREDGE CUT (SEE CROSS SECTIONS FOR SIDE SLOPE GRADING OF 2:1)
 2. DREDGE EXTENTS REPRESENT THE START/END STATIONS OF DREDGING ACTIVITIES
 3. SEE APPENDIX C IN CONTRACT DOCUMENTS FOR DETAILED ROCK CORE INFORMATION



CONSTRUCTION DRAWINGS 100%

	
ENGINEER OF RECORD: BRYAN D. FLYNN - FLORIDA P.E. #70886	
CLIENT CITY OF NAPLES 735 8TH STREET SOUTH NAPLES, FL 34102	PROJECT EAST NAPLES BAY DREDGING
TITLE DREDGE TEMPLATE DESIGN ALIGNMENTS	
	
JOB NO.: 100032809 DRAWN: MSS DESIGN: BDF CHECKED: JLP APPROVED: BDF SHEET NO.: C-105	
<small>NOTICE:</small> THE INFORMATION IN THIS DOCUMENT WAS PREPARED BY THE ENGINEER OF RECORD AND HIS/FHER CONSULTANTS TO ASSIST THE CLIENT IN THE DESIGN AND CONSTRUCTION OF THE PROJECT. THIS DOCUMENT IS NOT TO BE USED FOR ANY OTHER PURPOSES WITHOUT THE WRITTEN PERMISSION OF THE ENGINEER OF RECORD. ANY CHANGES TO THIS DOCUMENT WILL BE MADE BY THE ENGINEER OF RECORD AND HIS/FHER CONSULTANTS. NO RESPONSIBILITY SHOULD EVER BE MADE ON A DOCUMENT OR INFORMATION CONTAINED HEREIN BY ANY PARTY OTHER THAN THE ENGINEER OF RECORD AND HIS/FHER CONSULTANTS. ALL INFORMATION CONTAINED HEREIN IS UNLESS OTHERWISE NOTED TO BE FOR INFORMATIONAL PURPOSES ONLY AND SHOULD NOT BE USED FOR ANY OTHER PURPOSES WITHOUT THE WRITTEN PERMISSION OF THE ENGINEER OF RECORD AND HIS/FHER CONSULTANTS. THE ACCURACY OF THE INFORMATION CONTAINED HEREIN IS UNLESS OTHERWISE NOTED TO BE FOR INFORMATIONAL PURPOSES ONLY AND SHOULD NOT BE USED FOR ANY OTHER PURPOSES WITHOUT THE WRITTEN PERMISSION OF THE ENGINEER OF RECORD AND HIS/FHER CONSULTANTS. THE ACCURACY OF THE INFORMATION CONTAINED HEREIN IS UNLESS OTHERWISE NOTED TO BE FOR INFORMATIONAL PURPOSES ONLY AND SHOULD NOT BE USED FOR ANY OTHER PURPOSES WITHOUT THE WRITTEN PERMISSION OF THE ENGINEER OF RECORD AND HIS/FHER CONSULTANTS.	ORIGINAL ISSUED DATE: _____ REV. DATE _____ REV. BY _____ DESCRIPTION _____